



Burj Assila
Residences

Immerse Yourself in Luxury





Welcome to Luxury

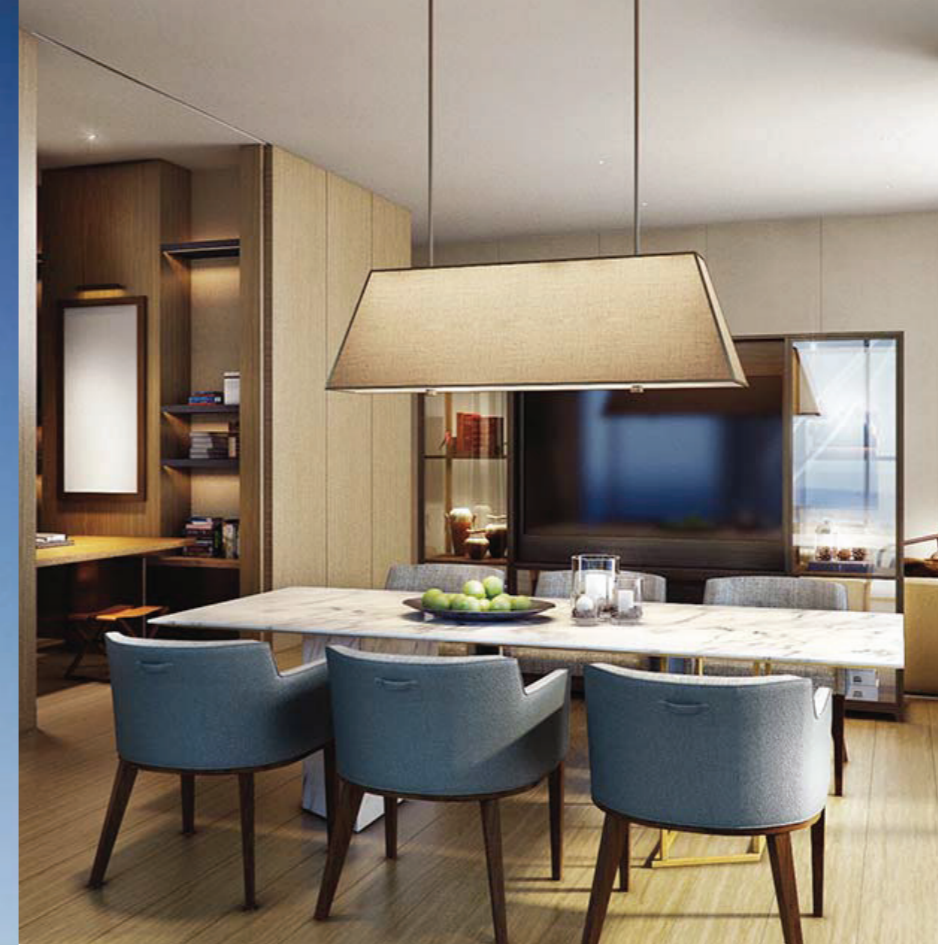


Elegance that Captivates
the Heart.

In the heart of Burj Assila, elegance arises. Here, you will spend your time marveling at the beauty and mystery of the Red Sea. You will be surrounded by a gentle breeze day and night as you make unforgettable memories with those you love.

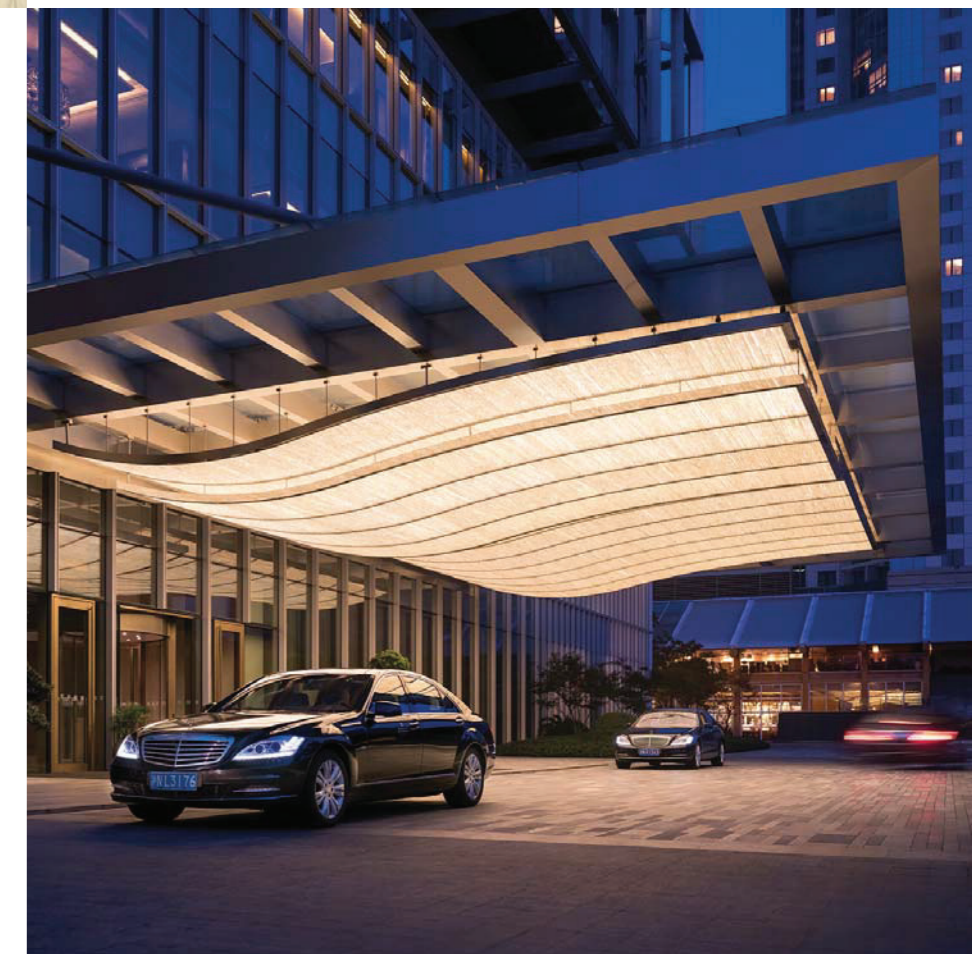
Burj Assila ... One of a Kind

Enjoy living at a unique contemporary tower and in residential units that are perfect for your elegant and luxurious lifestyle. You'll be engulfed in the warmth of an exquisite home and the comfort of exceptional hotel services.



Burj Assila
Residences


فندق شانغريلا جدة
Shangri-La hotel
JEDDAH





Distance	From Burj Assila Residences
500 m	Red Sea Mall
3 km	Auto Mall
3.5 km	Al-Nawras Park
4 km	Saudi German Hospital
4.5 km	The Globe Roundabout
5 km	GNP HOSPITAL
5 km	Mall of Arabia
8 km	King Abdulaziz International Airport

Where You're Meant To Be

Live the thrill in this strategic location in Jeddah where you can be close to all the action packed events and still have easy access to the main roads. Discover a life rich in beauty and experiences.



Immerse Yourself in Luxury

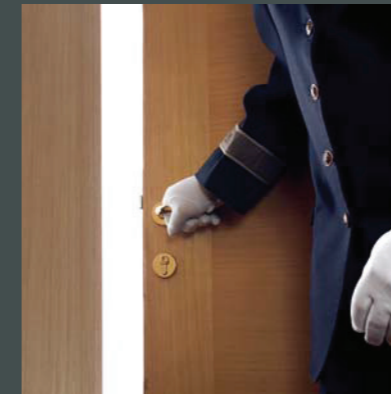
Everything here radiates elegance; every corner has been designed especially for you to inspire your creative mind and fill your heart with warmth and joy. Burj Assila is where you'll achieve your dreams of living a life of luxury.



Beauty



Sea

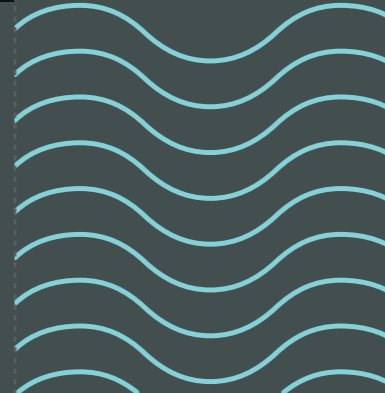


Luxury

Tranquillity



Magnificence

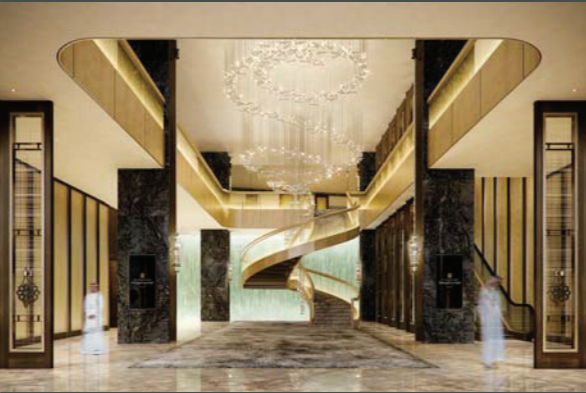
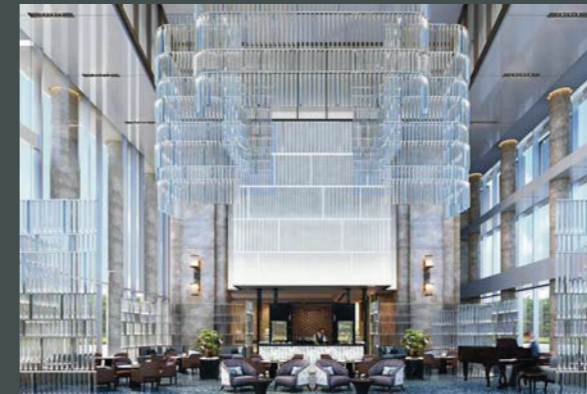




Communication



Elegance



Vitality



Hotel Services



Everything You Need Right Here

Live a fulfilling experience that has been customized to your needs; one that combines tranquillity and privacy with vitality and community. You'll find the comfort you desire with high calibre hotel services at Burj Assila.

Captivating Design

An exquisite design that follows international standards and matches your unique style and elegant taste; a work of art that meets your greatest expectations and is an expression of beauty and sophistication.





Here is a symphony that combines modernity and comfort; it's the perfect space that offers you optimum lighting and beautiful views. Enjoy your smart residential unit that celebrates your taste and style.

The Lifestyle You Desire

Everything here was designed to be an expression of your lifestyle, so you can have a fulfilling social life and find what sparks joy within you.





For You and Your Family

Our design expertise is reflected in every single detail within Burj Assila; each element perfectly complements your family's lifestyle and traditions.

Burj Assila Divisions

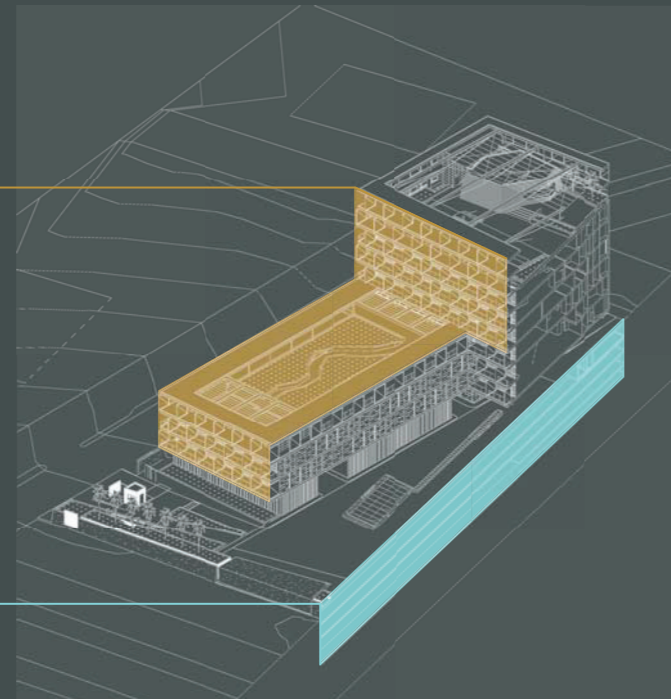
- Shangri-La Jeddah Hotel
- Burj Assila Residential Units
- Facilities and Services

8-1 Floor

Facilities and Services

3 - - 1 - Floor

Private Parking for Vehicles



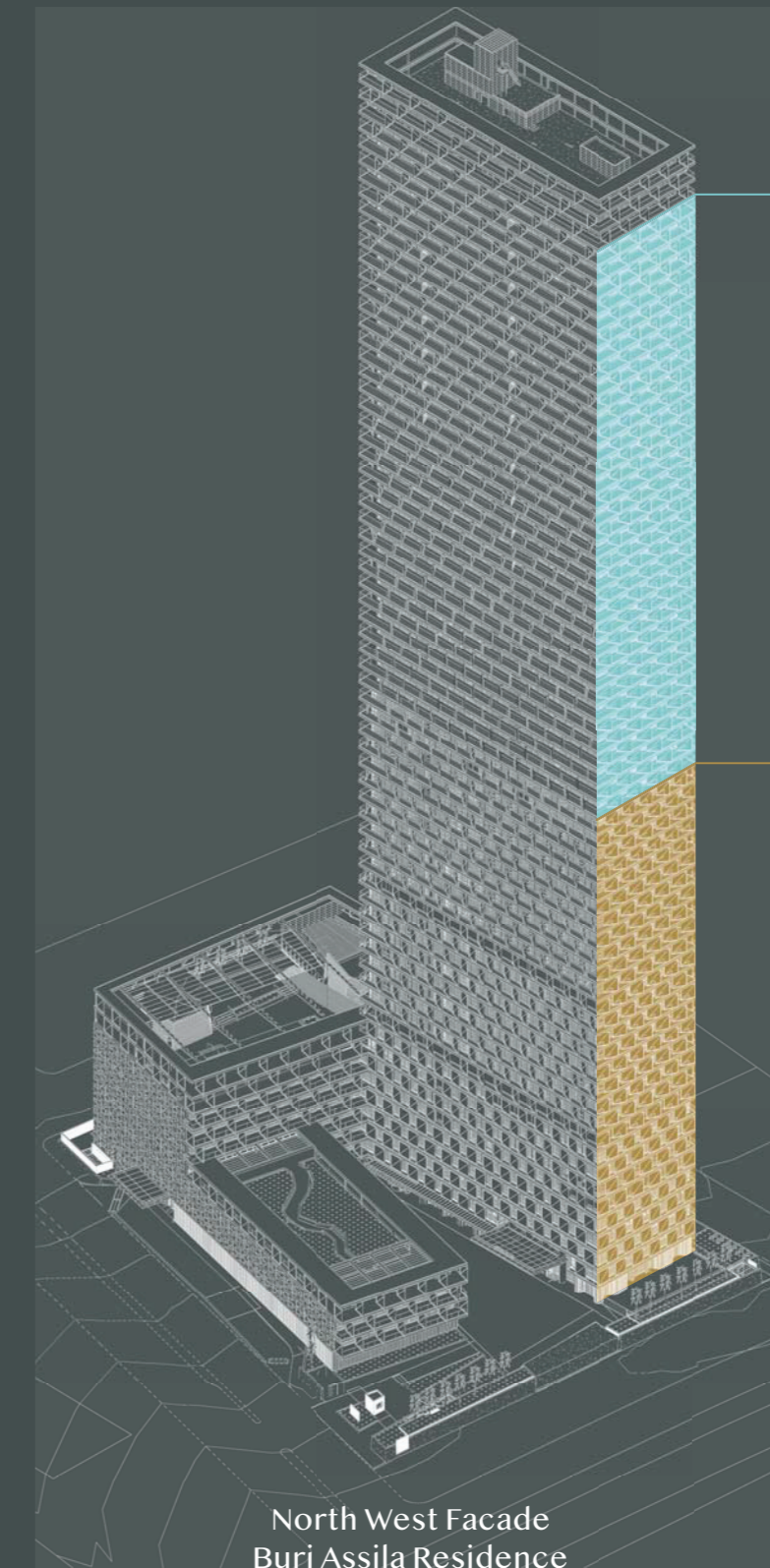
South West Facade
(Cut-out side for annex floors)

63-29 Floor

Burj Assila Residential Units

28-0 Floor

Shangri-La Hotel Jeddah

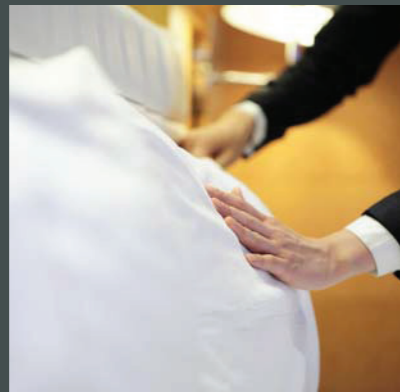


North West Facade
Burj Assila Residence

Facilities and Services



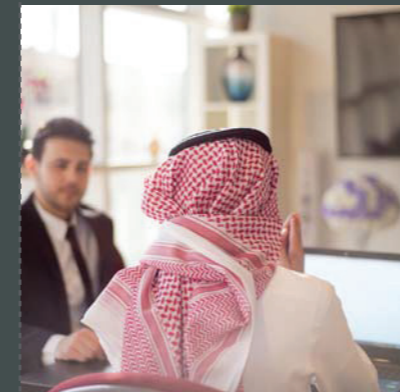
Dry clean and laundry



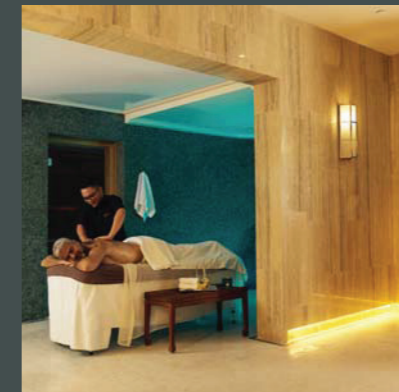
Kids' area



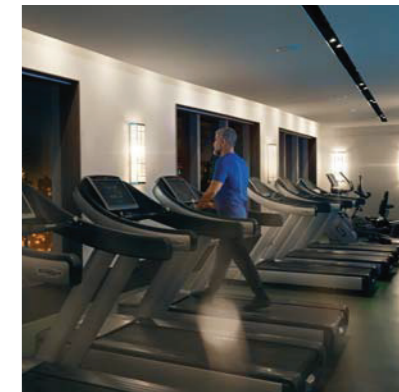
Event hall for 1200 people



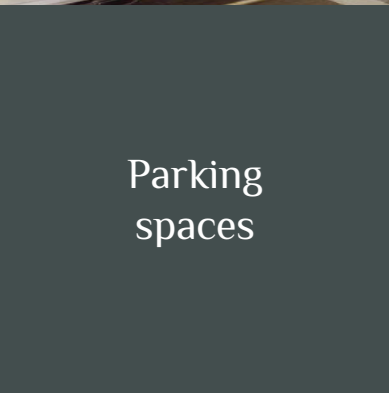
Pools



Squash courts



The best cafes and restaurants



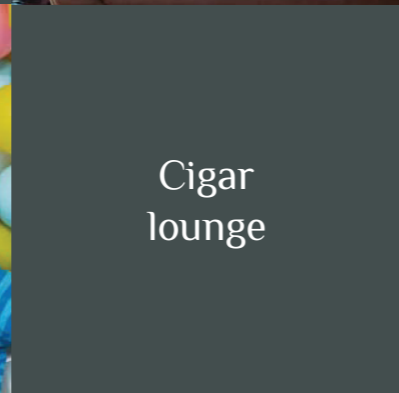
Parking spaces



Room service



Kids' area



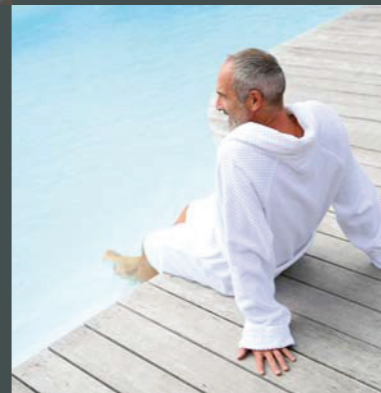
Cigar lounge



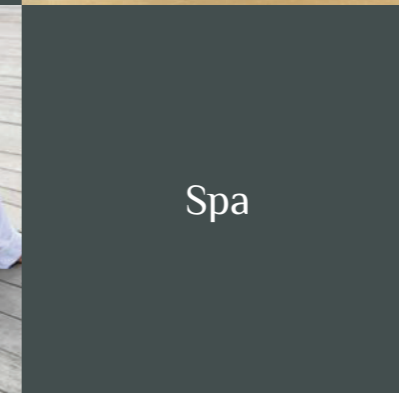
Business center



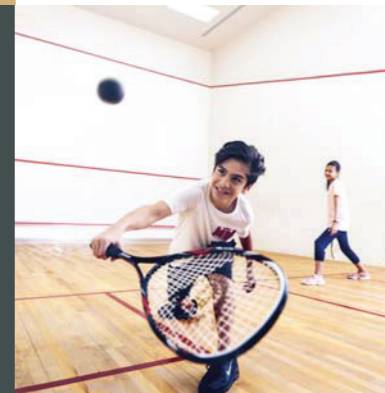
Pools



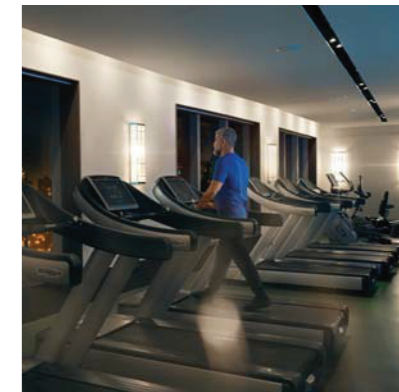
Spa



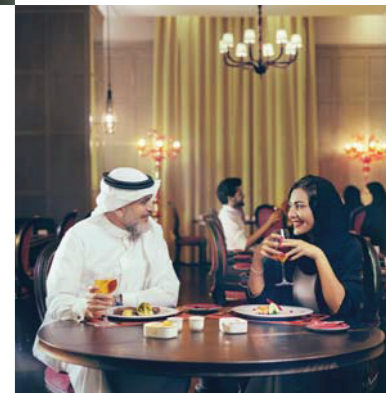
Squash courts



Health clubs for males & females



The best cafes and restaurants



Health clubs for males & females



Breathe In the Splendour

Unleash the lifestyle of your dreams and turn it into a reality in the most elegant and comfortable living spaces.



Bedroom 2

A. 292,6m²
B. 278,7m²

Bedroom 3

A. 362,9m²
B. 448,1m²

Bedroom 4

A. 725,2m²
B. 657,2m²
C. 724,1m²
Duplex. 585,2m²

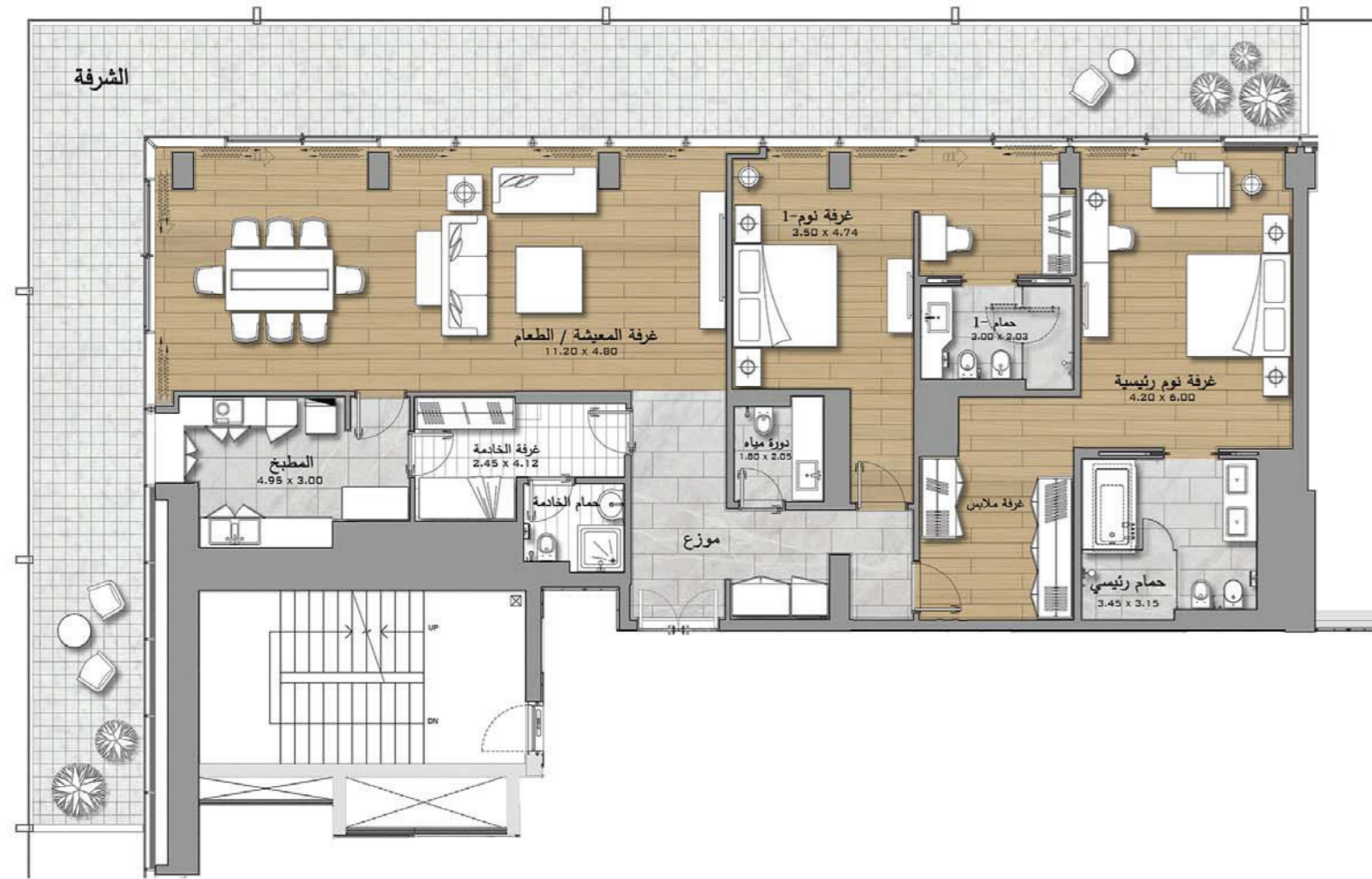
Penthouse

1514,3m²

Floors: 29-30, 33-35, 38-40, 45-47, 50-52, 55-57, 60

Model (A) - Unit 01

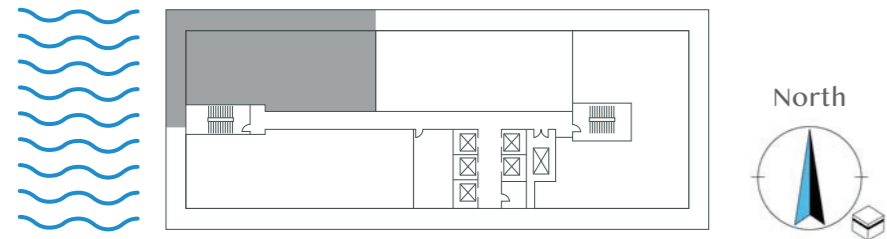
2 Bedroom / Northwest



Sales area

Square meters

Unit area	210
Balcony area	82,6
Total area	292,6

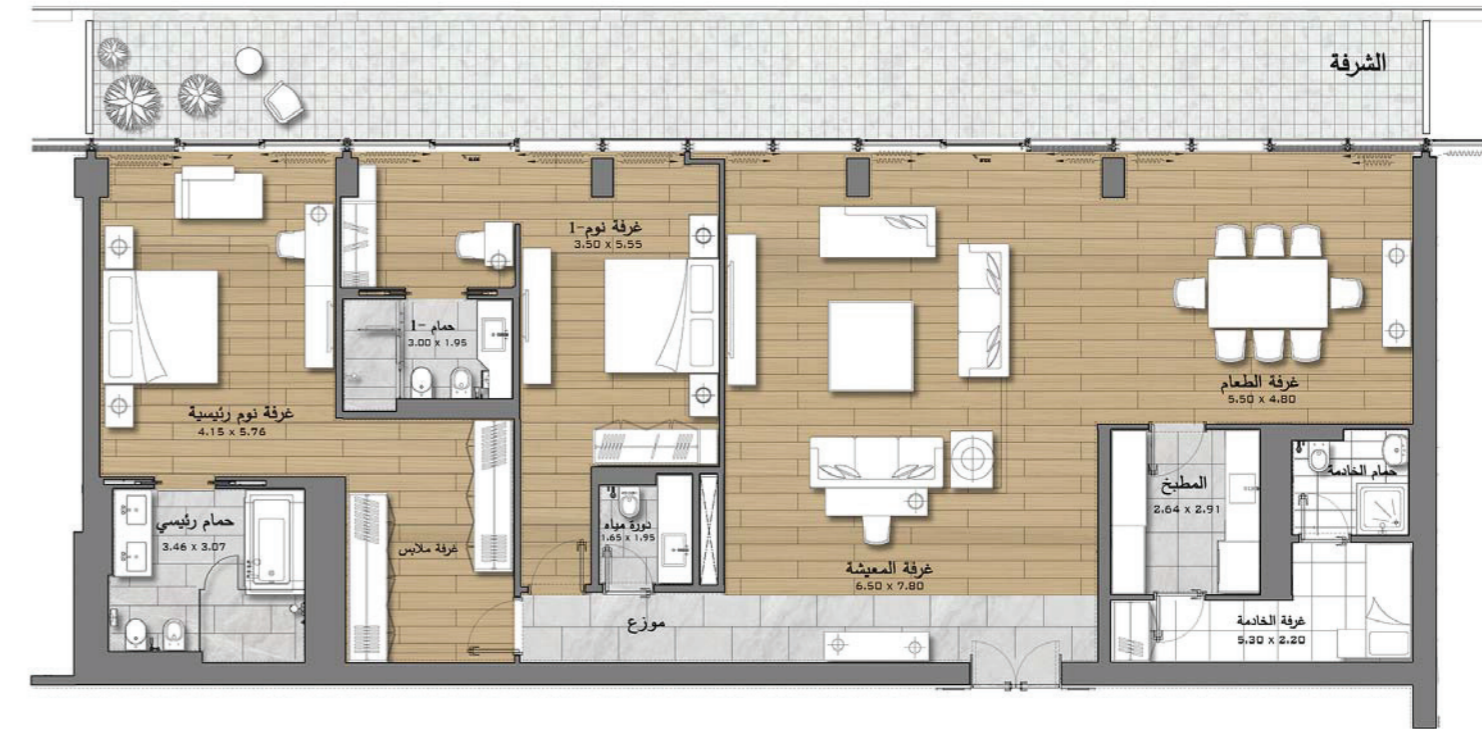


Note: 1- All materials, dimensions and designs are of approximate measurements 2- Information presented above is subject to change without prior notice 3- Actual size of unit may differ than the size mentioned here 4- The above drawings are for guidance and are not subject to true scale 5- Developer reserves the right for modification without any liability

Floors: 29-40, 43-59

Model (B) - Unit 02

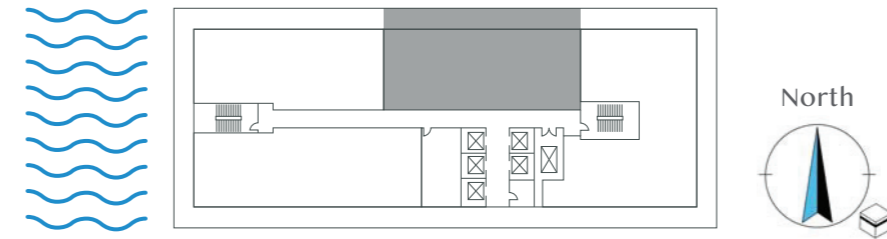
2 Bedroom / North



Sales area

Square meters

Unit area	226
Balcony area	52,7
Total area	278,7

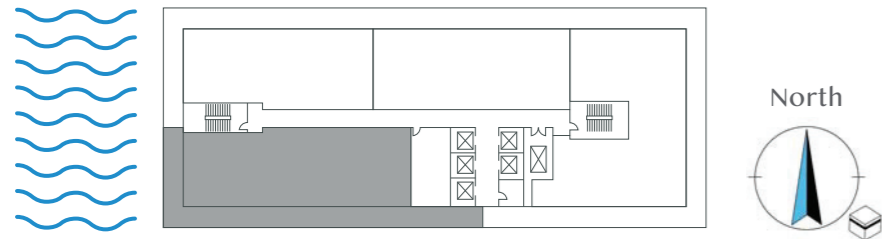
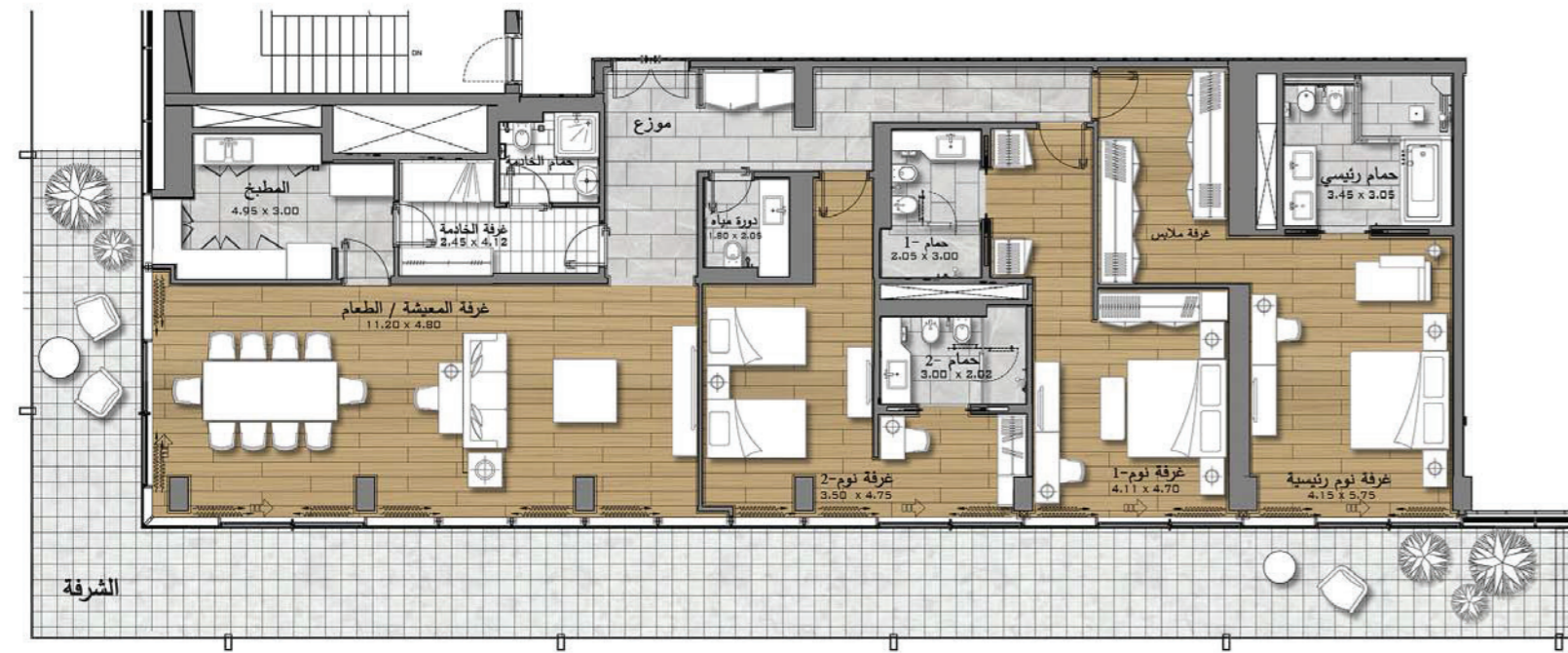


Note: 1- All materials, dimensions and designs are of approximate measurements 2- Information presented above is subject to change without prior notice 3- Actual size of unit may differ than the size mentioned here 4- The above drawings are for guidance and are not subject to true scale 5- Developer reserves the right for modification without any liability

Floors: 29-40, 43-60

Model (A) - Unit 03

3 Bedroom / Southwest



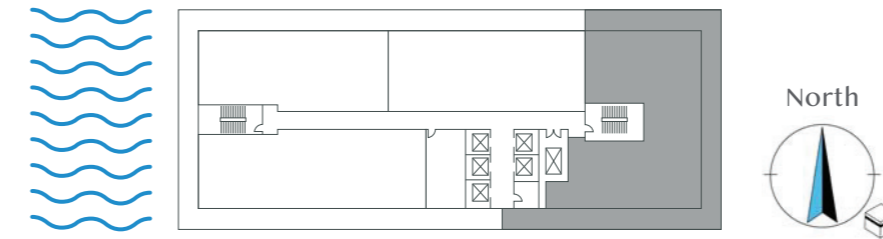
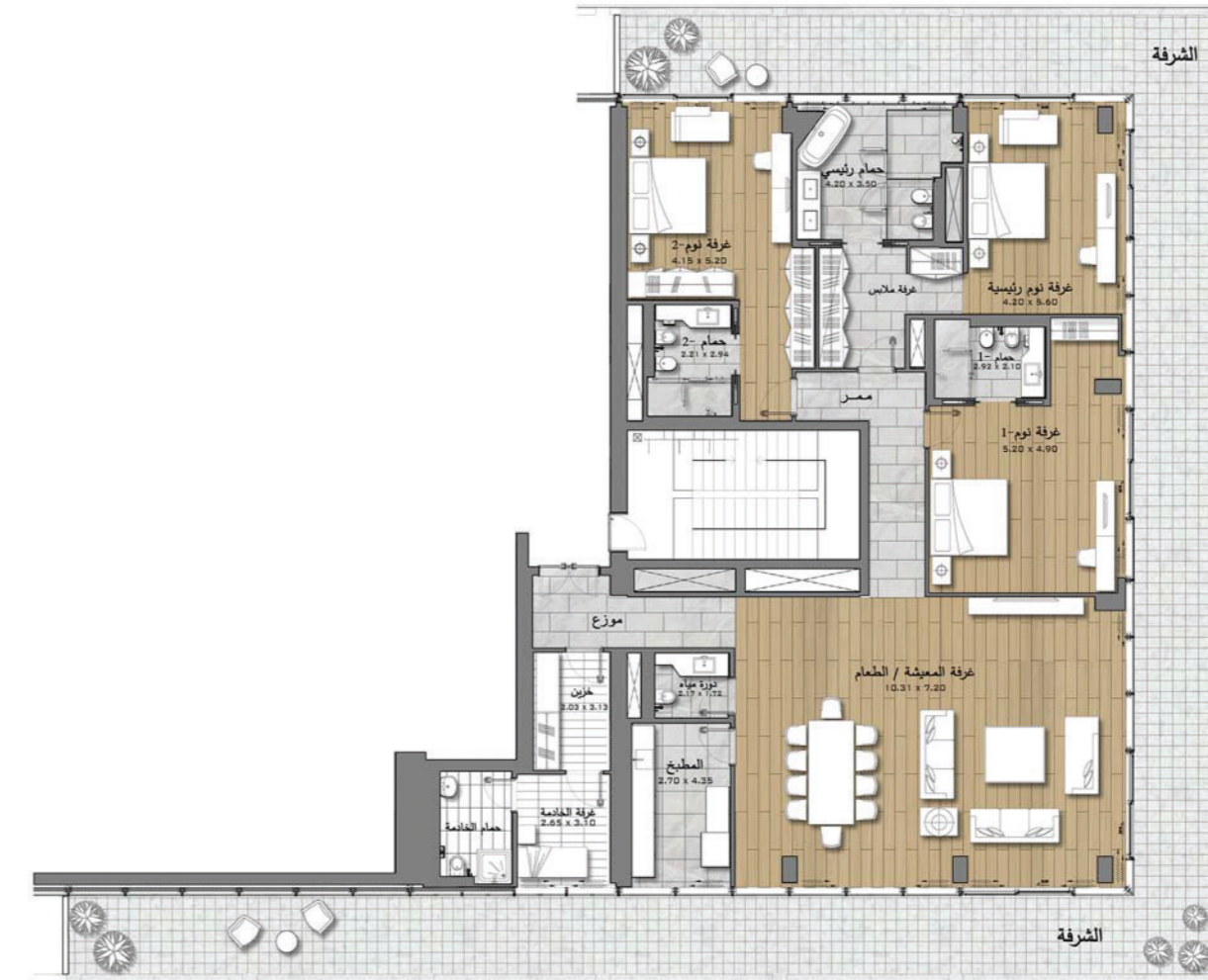
Sales area	Square meters
Unit area	253
Balcony area	109,9
Total area	362,9

Note: 1- All materials, dimensions and designs are of approximate measurements 2- Information presented above is subject to change without prior notice 3- Actual size of unit may differ than the size mentioned here 4- The above drawings are for guidance and are not subject to true scale 5- Developer reserves the right for modification without any liability

Floors: 29-40, 43-59

Model (B) - Unit 04

3 Bedroom / Northeast South



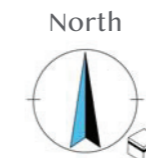
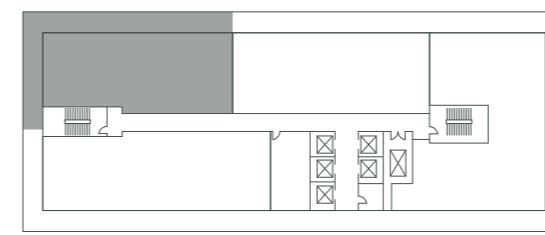
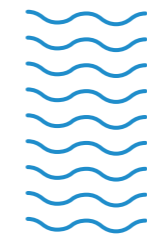
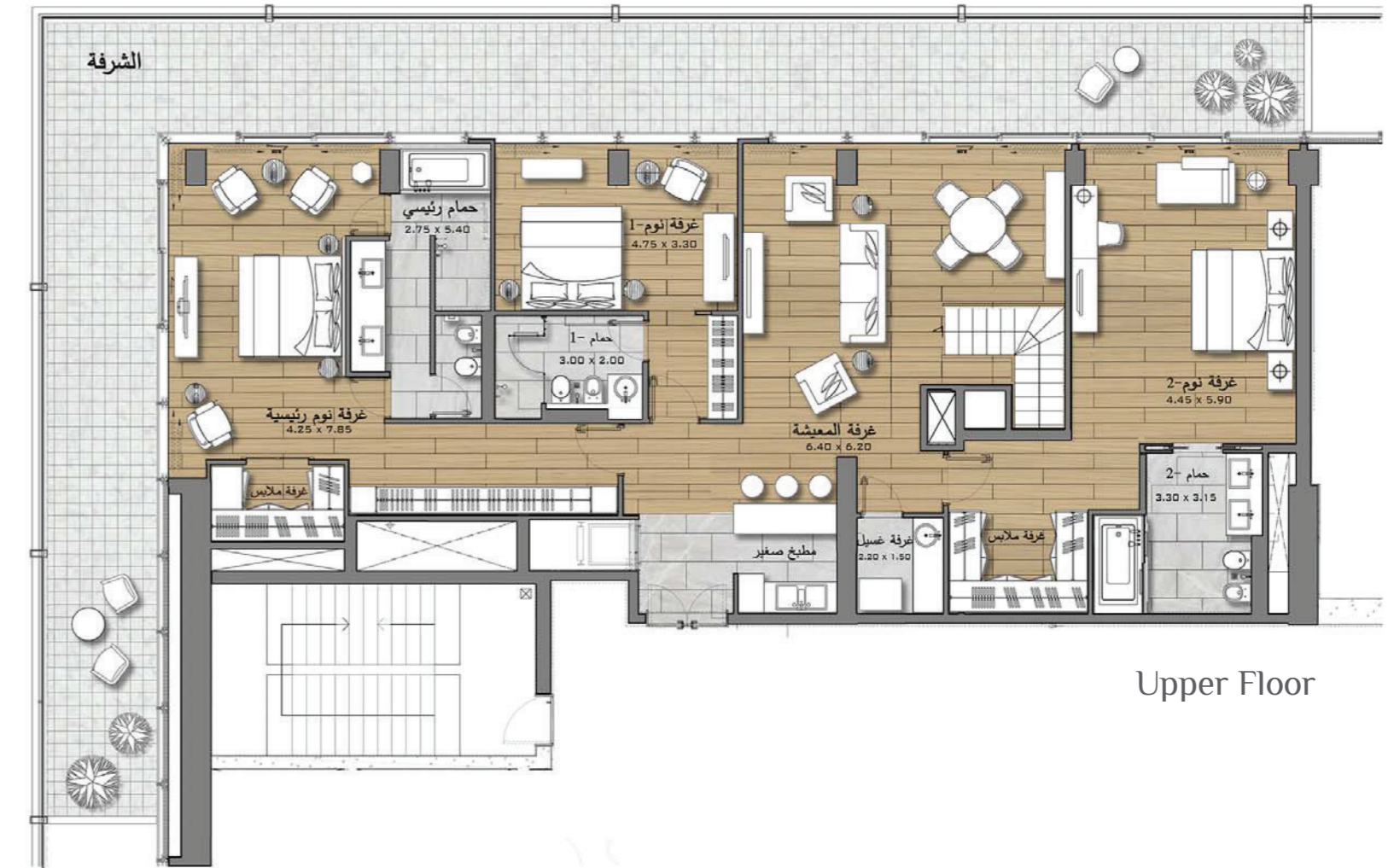
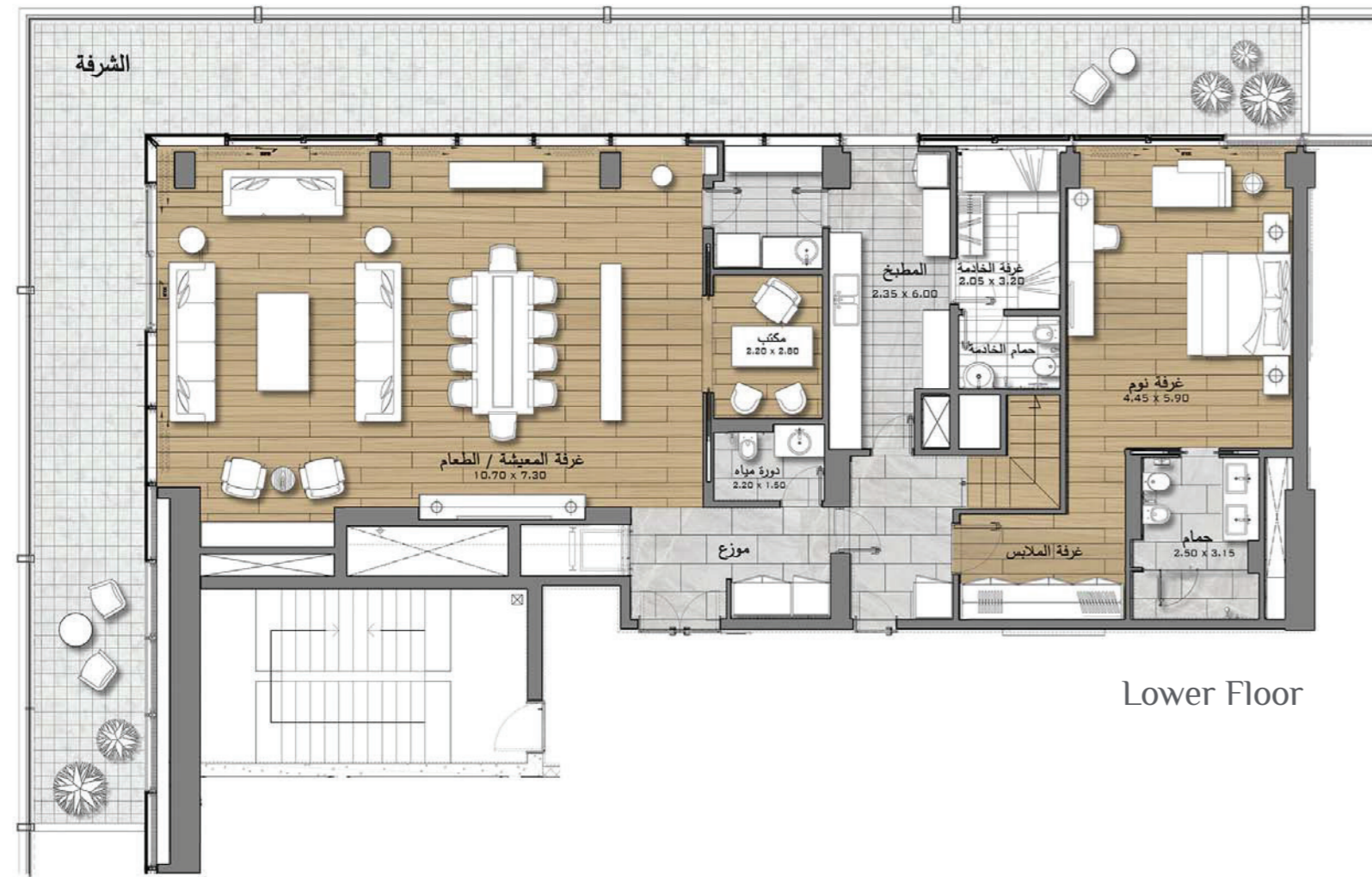
Sales area	Square meters
Unit area	300
Balcony area	148,1
Total area	448,1

Note: 1- All materials, dimensions and designs are of approximate measurements 2- Information presented above is subject to change without prior notice 3- Actual size of unit may differ than the size mentioned here 4- The above drawings are for guidance and are not subject to true scale 5- Developer reserves the right for modification without any liability

Duplex - Unit 05

4 Bedroom / Northwest

Floors: 31-32, 36-37, 43-44, 48-49, 53-54, 58-59



Sales area

Square meters

Unit area

420

Balcony area

165,2

Total area

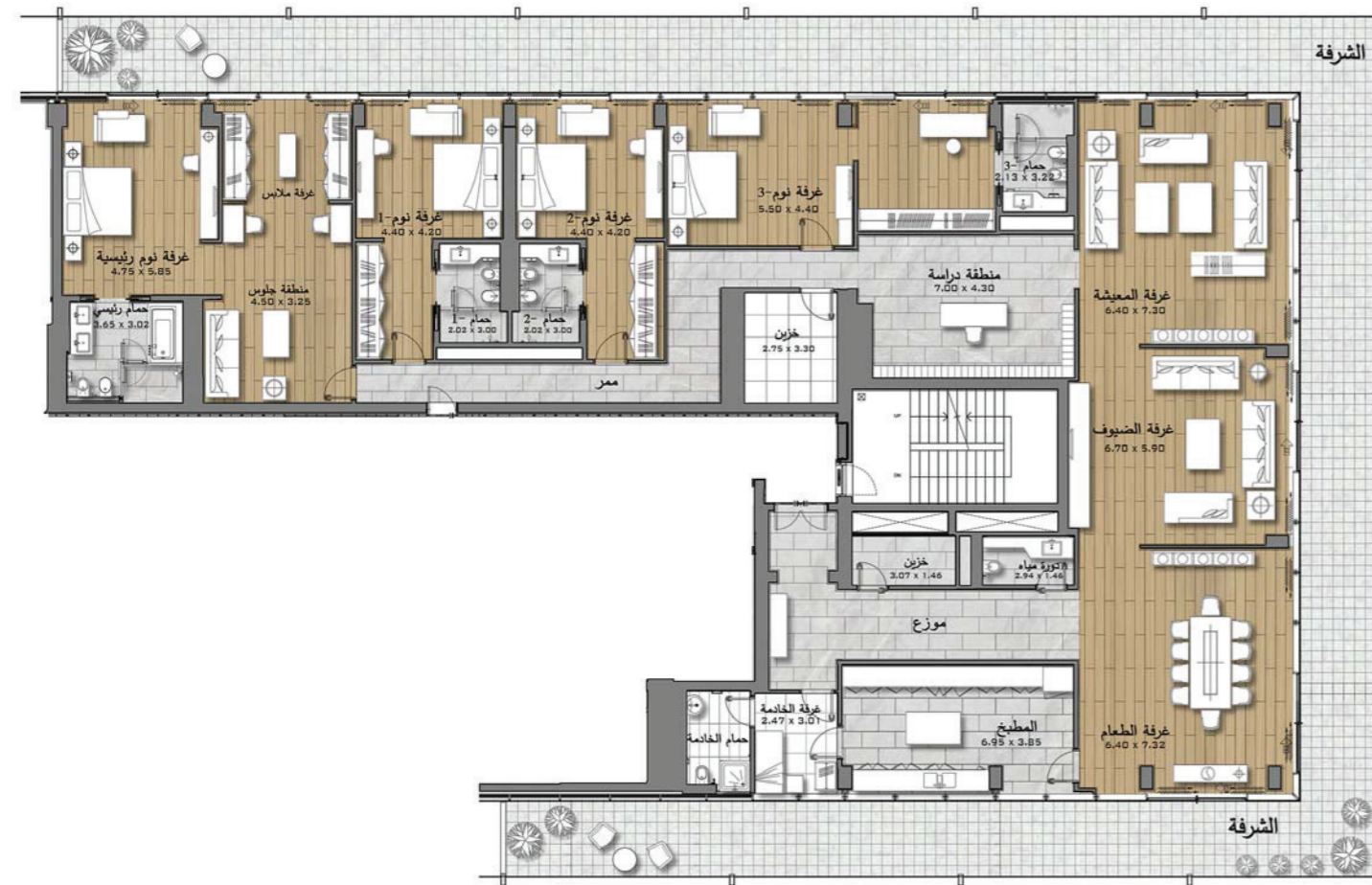
585,2

Note: 1- All materials, dimensions and designs are of approximate measurements 2- Information presented above is subject to change without prior notice 3- Actual size of unit may differ than the size mentioned here 4- The above drawings are for guidance and are not subject to true scale 5- Developer reserves the right for modification without any liability

Floor: 60

Model (A) - Unit 06

4 Bedroom / Northeast South



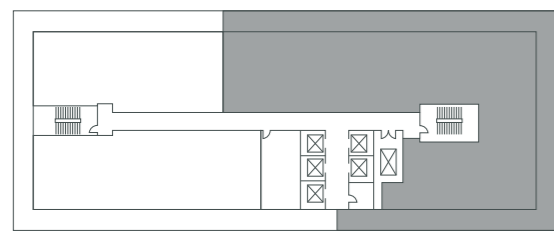
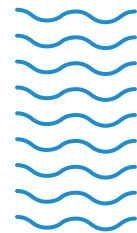
Sales area

Square meters

Unit area 526

Balcony area 199,2

Total area 725,2



Note: 1- All materials, dimensions and designs are of approximate measurements 2- Information presented above is subject to change without prior notice 3- Actual size of unit may differ than the size mentioned here 4- The above drawings are for guidance and are not subject to true scale 5- Developer reserves the right for modification without any liability

Floor: 62

Model (B) - Unit 07

4 Bedroom / Northwest South



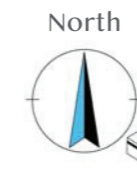
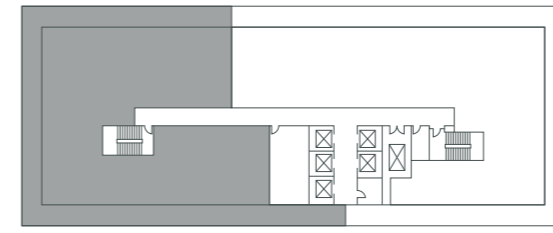
Sales area

Square meters

Unit area 479

Balcony area 178,2

Total area 657,2



Note: 1- All materials, dimensions and designs are of approximate measurements 2- Information presented above is subject to change without prior notice 3- Actual size of unit may differ than the size mentioned here 4- The above drawings are for guidance and are not subject to true scale 5- Developer reserves the right for modification without any liability

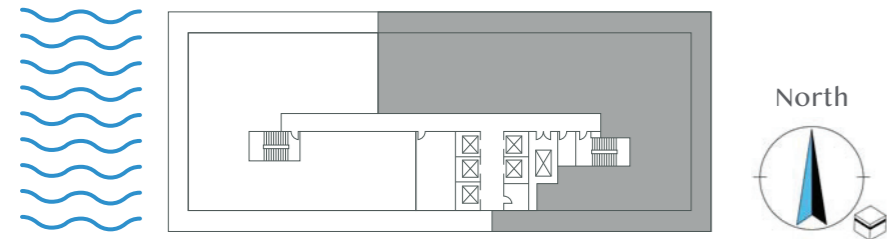
Floor: 62

Model (C) - Unit 08

4 Bedroom / Northeast South



Sales area	Square meters
Unit area	509
Balcony area	215,1
Total area	724,1



Note: 1- All materials, dimensions and designs are of approximate measurements 2- Information presented above is subject to change without prior notice 3- Actual size of unit may differ than the size mentioned here 4- The above drawings are for guidance and are not subject to true scale 5- Developer reserves the right for modification without any liability

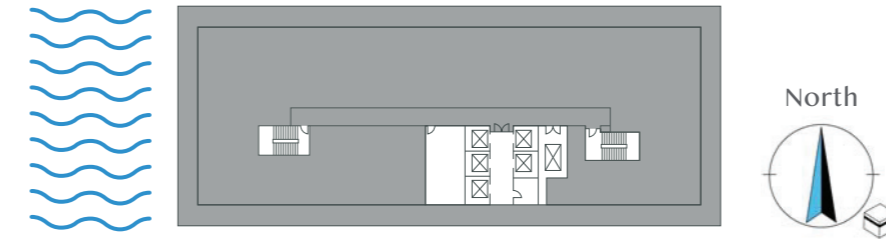
Floor: 63

Unit 09

Penthouse / Northeast West South



Sales area	Square meters
Unit area	1121
Balcony area	393,3
Total area	1514,3



Note: 1- All materials, dimensions and designs are of approximate measurements 2- Information presented above is subject to change without prior notice 3- Actual size of unit may differ than the size mentioned here 4- The above drawings are for guidance and are not subject to true scale 5- Developer reserves the right for modification without any liability



Owner & developer



Hotel operator



Contractor



Sales & marketing

